



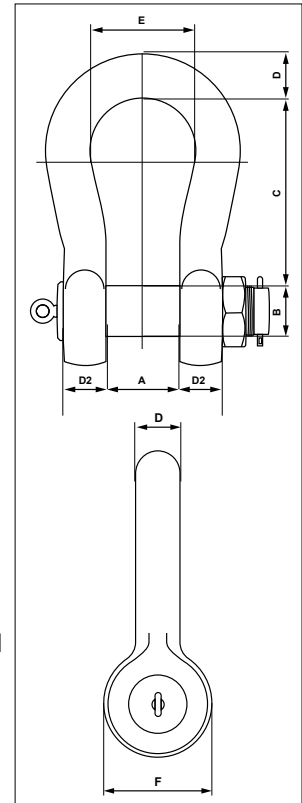
S-2135 / S-2145



- Trusted Crosby quality.
- Embossed Angle Indicators included.
- Meets performance requirements of Grade 8 shackles.
- 5:1 Design Factor.
- Individually proof loaded to 2 times the Working Load Limit.
- S-2135 and S-2145 shackles are available with aluminum paint and are not galvanized.
- Operating temperature range -20° C (-4° F) to 200° C (392° F) for S-2135 and S-2145.
- Material inspection certificate Type 3.1 according to EN 10204.
- DNV type approved: DNVGL-ST-0377 and DNVGL-ST-0378.
- Meets performance requirements of federal specification RR-C-271H, except for those provisions required of the contractor.
- Meets or exceeds all requirements of ASME B30.26.
- S-2135CT COLD TUFF® available from 85t to 400t with an operating temperature range of -60°C (-76°F) up to +200°C (392°F).
- DNV witness proof testing available on request for all sizes and models.
- Magnetic Particle Inspection available on request for all sizes and models.
- Look for the Red Pin®... the mark of genuine Crosby quality.

SHACKLES

1



S-2135 / S-2145 Bolt Type Anchor Shackles

Frame Size (in)	Working Load Limit (t)	Stock No	Weight (kg)	Dimensions (mm)							
				A	+/- 0	B	C	D	D2	E	F
S-2135											
3	85	1205009	78	127	+6 / -0	83	330	85	80	190	162
3 1/2	120	1205018	115	144	+6 / -0	95	380	95	89	238	200
4	150	1205027	162	165	+8 / -0	108	385	105	100	275	230
4 3/4	200	1205036	240	180	+8 / -0	125	450	120	110	280	270
5	250	1205045	306	205	+10 / -0	140	520	130	115	305	290
6	300	1205054	368	205	+10 / -0	150	530	140	120	305	315
7	400	1205063	602	230	+10 / -0	175	575	160	160	325	365
7 1/4	500	1205234	735	250	+12 / -0	185	650	180	160	350	385
8	600	1205243	969	275	+13 / -0	205	650	200	185	375	430
8 1/4	700	1205252	1091	300	+15 / -0	215	650	210	200	400	440
8 1/2	800	1205261	1106	300	+15 / -0	220	650	210	200	400	450
9 1/2	1000	1205270	1476	340	+17 / -0	240	700	240	240	420	500
10	1250	1205279	1955	360	+18 / -0	270	750	260	225	450	570
11	1500	1205288	2327	360	+18 / -0	290	800	280	225	450	610
S-2145											
3	120	1205072	78	127	+6 / -0	83	330	85	80	190	162
3 1/2	150	1205081	115	144	+6 / -0	95	380	95	89	238	200
4	175	1205090	162	165	+8 / -0	108	385	105	100	275	230

Maximum Proof Load is 2.0 times the Working Load Limit.

